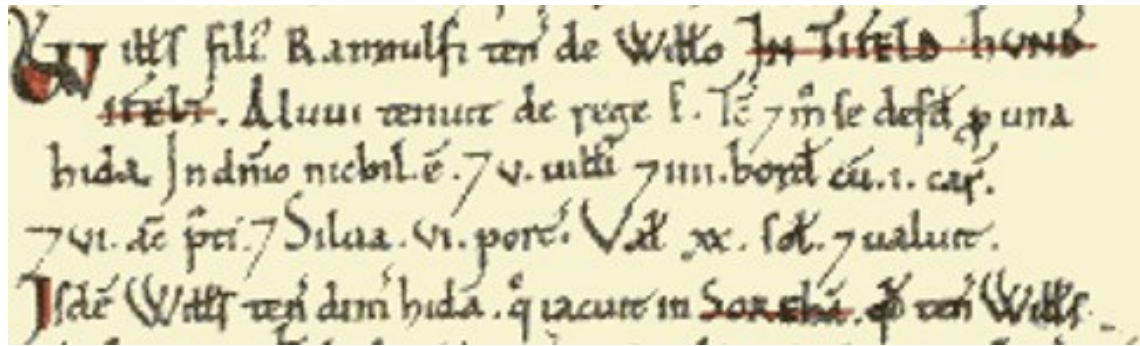


ANCIENT IFIELD



Land of William of Braose

Households: 5 villagers. 4 smallholders. Ploughland: 1 men's plough teams.

Other resources: Meadow 6 acres. Woodland 6 swine render.

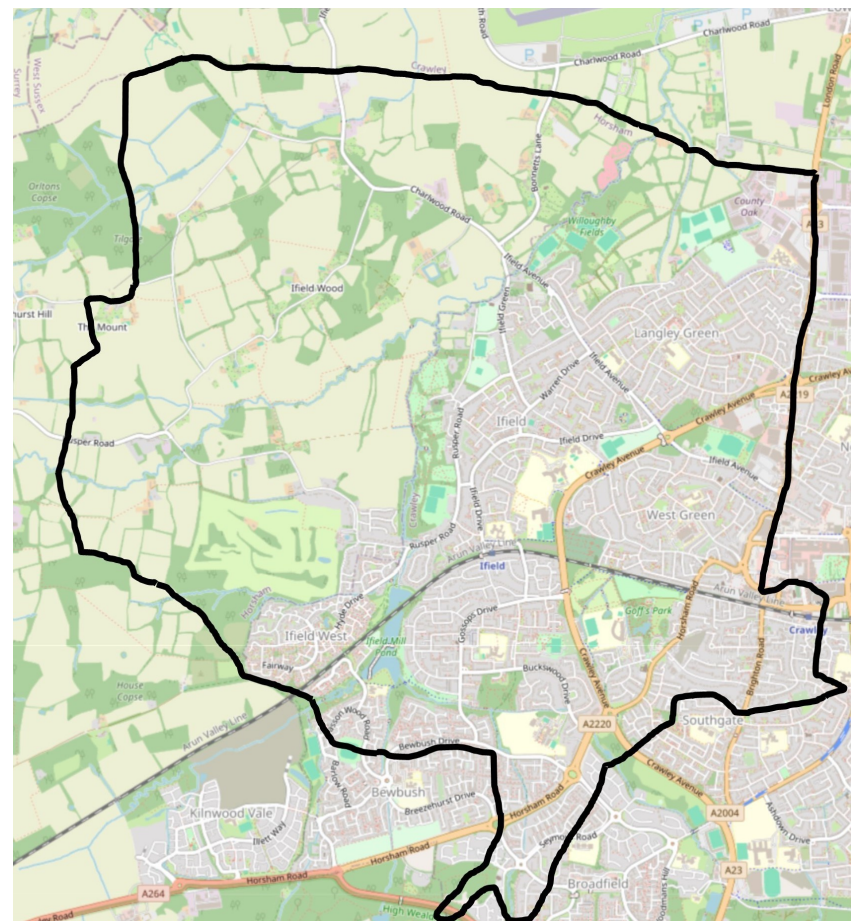
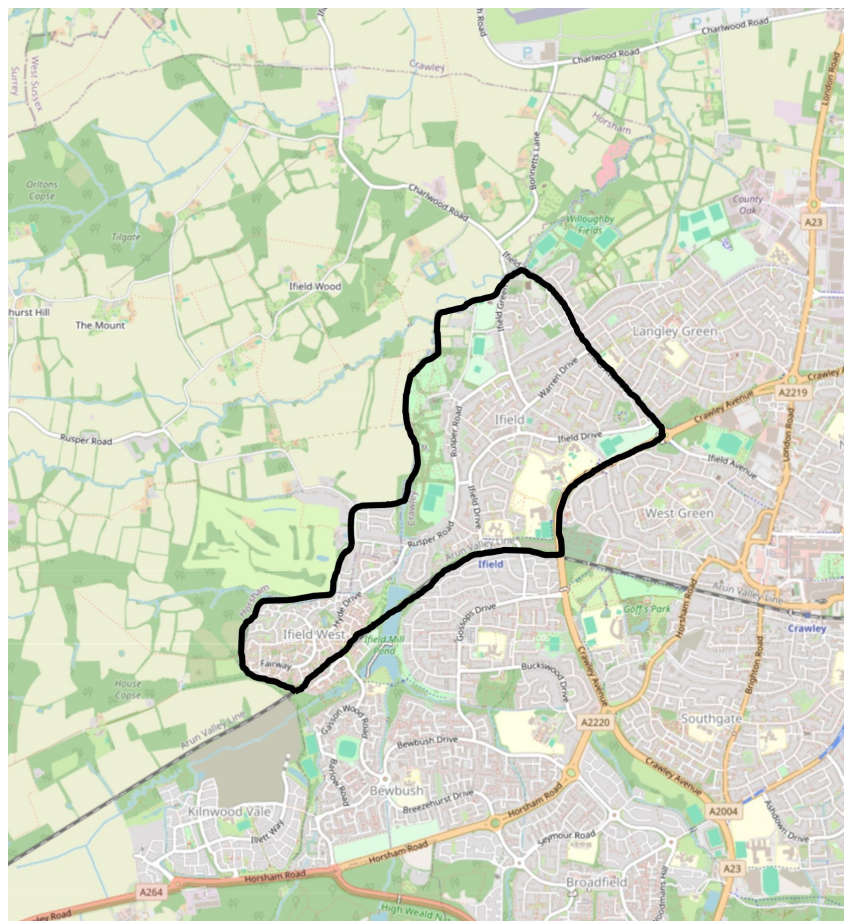
Annual value to lord: 1 pound in 1086; 1 pound in 1066.

Overlord in 1066: King Edward Lord in 1066: Alwy

Tenant-in-chief in 1086: William of Braose, Lord in 1086: William son of Ranulf.

Today, Ifield is best known as being a modern neighbourhood on the western side of Crawley New Town. Home to around 10,000 people, the neighbourhood is bounded by Ifield Avenue, Crawley Avenue, the Arun Valley Railway and Ifield Brook, but this hasn't always been the case.

Until 1956 Ifield was a large Civil and Ecclesiastical Parish encompassing the modern neighbourhoods of Ifield, Langley Green, West Green, Gossops Green and parts of Southgate, Broadfield & Bewbush. The Parish boundary was at County Oak in the north, Crawley High Street in the east, Target Hill in the south and almost to Lambs Green in the east - an area of over 4,000 acres (6.25 sq. miles). St Margaret's church is in the geographical centre of the parish and these boundaries broadly reflect the lands of the old Manor of Ifield, which was recorded in the Domesday book of 1086.



Text courtesy and copyright of Ian Mulcahy www.iansapps.co.uk

Ifield Domesday Book entry courtesy and copyright of opendomesday.org

Maps courtesy and copyright of openstreetmap.org

www.ifieldparishmap.org